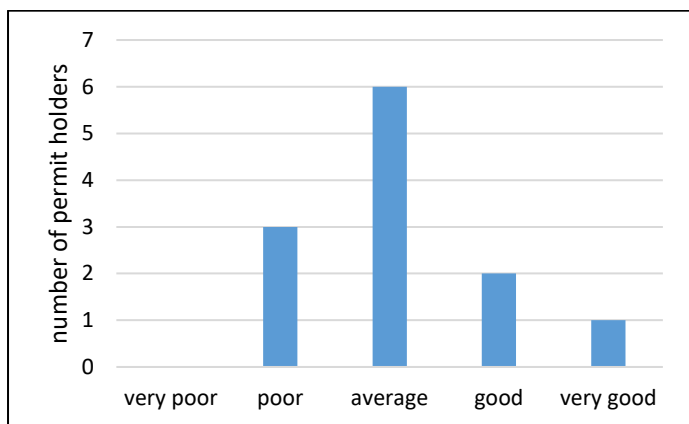


1) How has whelk fishing been this year?



Is there any specific reason for this?

Poor

- small whelks have to catch up to 25mm riddle size
- there was plenty of whelks but 70-80% were going through the riddle

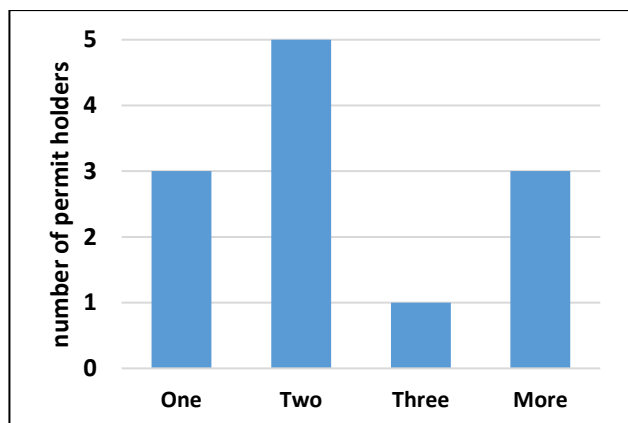
Good

- I think the bigger riddle helped letting more back

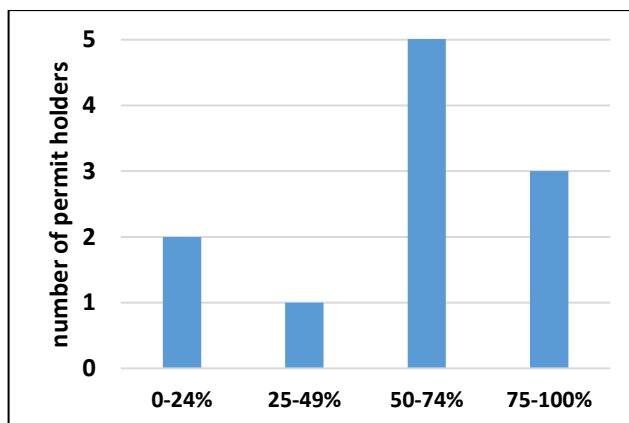
2) Where have you sold your catch to this year (fill in estimated percentage)?

Within KEIFCA district	4	Within UK	5	Internationally within EU	3	Internationally outside EU	0
---------------------------	----------	--------------	----------	------------------------------	----------	-------------------------------	----------

3) On average how many people have you employed fishing for whelks this year?



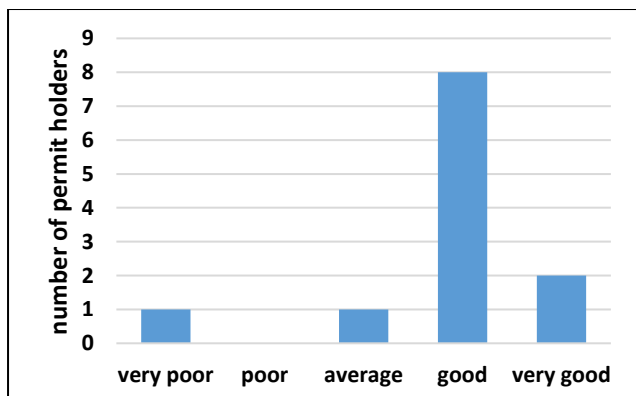
4) What percentage does whelk fishing contribute to your total income from fishing?



5) Do you fish for whelks outside the 6 nautical mile limit?

No	7	yes occasionally	3	yes regularly	2	yes always	0
----	----------	---------------------	----------	------------------	----------	---------------	----------

6) How have prices for whelks fared over the year?

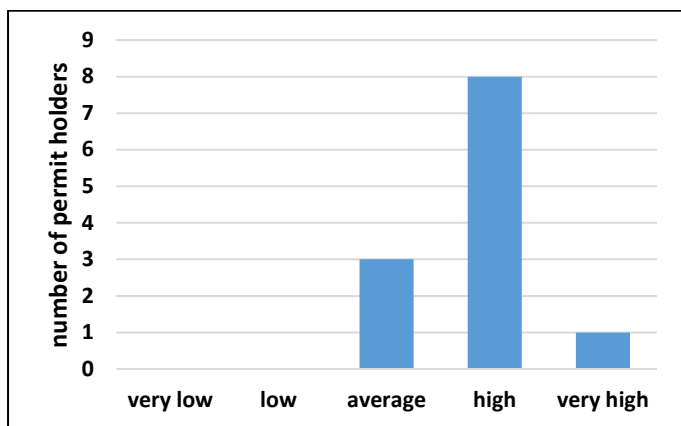


Is there any specific reason for this?

Good

- not many whelks
- shortage
- exported to Korea
- buoyant Korean market
- supply & demand

7) What kind of numbers of juveniles or small whelks have you seen this year?



Is there any specific reason for this?

Average • same as every year

High they need to get to 25mm

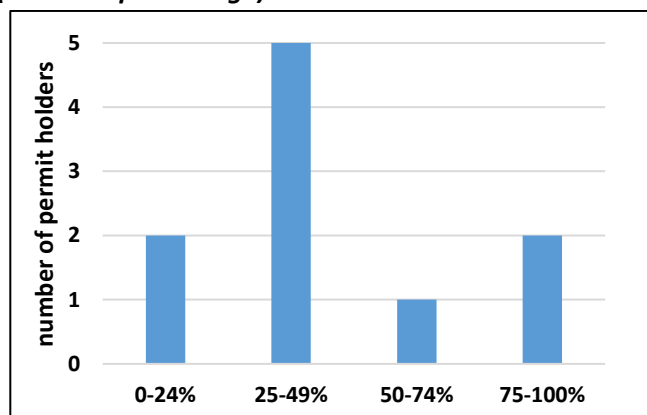
- whelks seem to have a longer spawning period
- as large are thinned out smaller/younger whelks flourish

Very High • they are naturally a smaller whelk in Hythe Bay

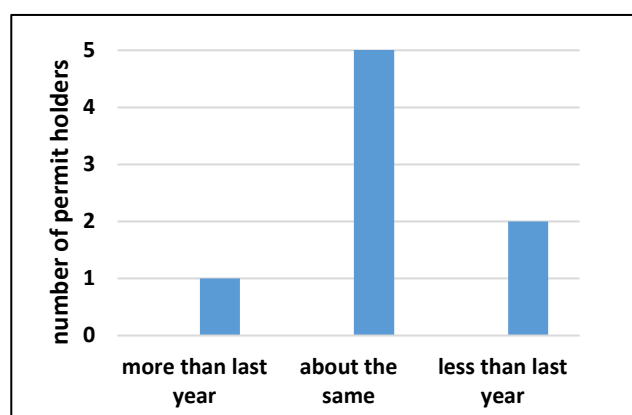
Any other comments on the fishery this year?

- Some areas have a higher percentage of undersized whelks, some have hardly any
- Struggled a bit due to stormy weather and prolonged hot summer, but when we have been able to get away it has been fairly good
- over almost 10 years fishing whelks and returning back to same areas the whelks are still plentiful, which is nice to see as the youngest whelk fishermen in the area

8) How many undersized whelks are usually returned (estimate percentage)?



How does this compare with last year?



9) What do you think fishing will be like next year?

very poor **1** poor **1** normal **4** good **3** very good **1**

Is there any reason why you think that?

Very Poor • too many pots in water, too many licences given to part timers

Poor • riddle too big for where we fish

Normal • has been less pressure in the area so far this year with less boats fishing whelks so this should help

- the number of just undersize whelks thrown back looks healthy

Good • hopefully they will catch up to the 25mm

- new skipper and better boat

Very good • load going back to grow

10) What do you think the management of the stock should be next year?

A) *Number of pots*

<u>Category 1 (Full time)</u>			<u>Category 2 (Hobby)</u>		
Less than 300 pots	Keep at 300 pots	More than 300 pots	Less than 10 pots	Keep at 10 pots	More than 10 pots
2	7	1	2	3	

Additional comment:

- Less than 300** • 100 per boat, everyone with a whelk licence should have to prove that most of their earnings come from fishing not building or farming
- Keep at 300** • 300 is viable inside 6nm without hammering the stocks, we do not want to be forced outside the 6 mile limit
• 300 is a good number to keep the fishery
- More than 300** • only if catch rates are there

B) *Riddle size (the size of the gauge used to measure the riddle)*

Less than 25mm	Keep at 25mm	More than 25mm
4	6	

Additional comment:

- Less than 25mm** • there are a lot of sizeable whelks going through a 25mm riddle
• to allow for any tolerances
• 22mm
- Keep at 25mm** • less than 25mm for area 31F1-f & 31F1-j but 25mm works very well in area 31F1-b
• 25mm is too big really as lets lots of oversized back but happy to keep it at that for the future of the fishery but NO BIGGER!

C) *Escape holes*

Less than 10 holes	Keep at 10 holes	More than 10 holes	Less than 25mm	Keep at 25mm	More than 25mm
1	8	1	1	8	

Additional comment:

- Less than 10** • this is the only section I have a problem with! Holes in pots do nothing apart from make the pot weaker, making the risk of plastic pollution higher!
- Keep at 10** • the holes are irrelevant on a 1 day lay but they do let some undersize whelks out after 2 days
• keep at 25mm or more but keep riddle size smaller
• we keep off juvenile stock, on good ground the pots are very selective
• please don't mess around with hole size/numbers any further

11) Is there any research you think we should carry out to better understand the stock?

- Different areas whelks might not grow to 25mm, there should be different riddle size for different areas
- Get a whelk boat, 4 of your staff fish for a job, chuck back what you catch but only pay yourselves what the catch would be worth. You will soon understand the job if you do it!
- In Hythe Bay there should be a closed season mid-October – mid-February. Folkestone boats have done this for years but now vessels from other ports are fishing it in winter so it's not getting a recovery period.
- I think there should be a closed season for spawning of 4 weeks from 1st December to 1st January