

To lead, champion and manage a sustainable marine environment and inshore fisheries

Management of Thornback Rays

The thornback ray fishery is a key commercial and recreational fishery in the Kent and Essex district. KEIFCA members will discuss improvements and actions for future management of this stock.



Click [here](#) for more information

Essex Estuaries SAC

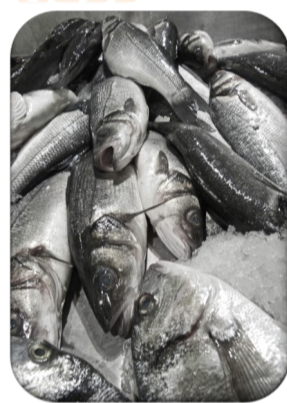


Members will be asked at their meeting to be held on 12 September to make a byelaw banning bottom trawling in specified areas in the Essex Estuaries SAC. If made, the byelaw will be advertised and comments and objections accepted for a period of 28 days following the advertising.

For information on the proposed byelaw and it's associated Impact Assessment click [here](#)

Science, Management and Enforcement of Bass

Officers from KEIFCA and Cefas will be talking to Members at the meeting on 12 September regarding the development of bass management at regional, national and international levels.



Click [here](#) for further details

GET IN TOUCH



If you have any concerns about fishing activities in your area we want to hear from you.

**Call us today on
01843-585310**



We are now on Twitter.
Follow us [@KentEssexIFCA](#)

QUARTERLY MEETINGS

The last quarterly meeting took place at Gravesham Council offices on 22 January 2016. Matters discussed included:

- [Blackwater, Crouch, Roach and Colne MCZ](#)
- [River Medway Nursery Area](#)
- [Bass update](#)

The next meeting will take place on:

Monday 12 September at 10am

at Marconi Room, Chelmsford Borough Council, Duke Street, Chelmsford, Essex. CM1 1JE

Among the items up for discussion are:

- [Strategic Evidence Plan](#)
- [Marine Protected Areas update](#)
- [Cockle Fishery](#)

Please click [here](#) to see our website for the full agenda and reports.

If you experience any problems with the links you will find all the material on our website www.kentandessex-ifca.gov.uk