

To lead, champion and manage a sustainable marine environment and inshore fisheries

2025 WHELK FISHERY REVIEW



Anyone fishing for whelks in the Kent and Essex district, both commercially and recreationally, are required to apply for a permit from the IFCA to

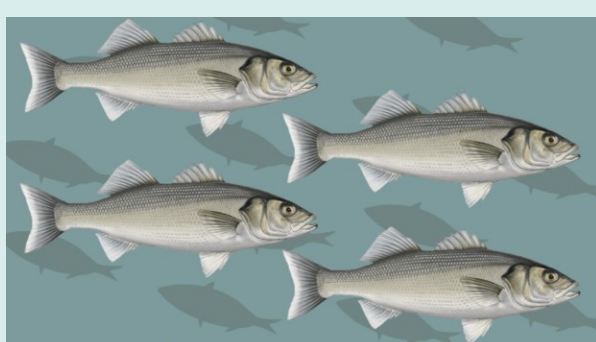
allow them to do so. At their meeting on 27 January, Members will be provided with an overview of the 2025 whelk fishery, to include markets, analysis of whelk landings and an update on national whelk management.



Please click [here](#) for the report

FISHERIES MANAGEMENT PLANS

Fisheries Management Plans (FMPs) are considered to be the best way to manage fisheries. They



allow fisheries to be managed according to local conditions and priorities, to be adaptive and for management to develop over time. The Cockle FMP, Skates and Ray FMP and Southern North Sea non-quota demersal species FMP were published on 16 December 2025. At their meeting on 27 January, Members will be provided with details of these new plans



For more information [click here](#)



The All-Party Parliamentary Group on Fisheries is a neutral, cross-party forum for debate, discussion and learning within Parliament. The Group was founded by MPs and Peers who wanted to promote and support a thriving and sustainable UK fishing industry, whilst exploring key questions for the future of fishing, processing, coastal communities and the marine environment.

The APPG on Fisheries has regular meetings within Parliament or online to discuss happenings within the UK fisheries industry, as well as listening to the thoughts of anybody with an interest in the sector. This includes receiving expert presentations and testimony from those working in fisheries, or on fisheries issues. Based on these discussions, the APPG compiles various written outputs, and from time to time carries out in-depth research into pressing issues relating to fisheries. These outputs are published on their [website](#).

To lead, champion and manage a sustainable marine environment and inshore fisheries

CUTTLEFISH RESEARCH

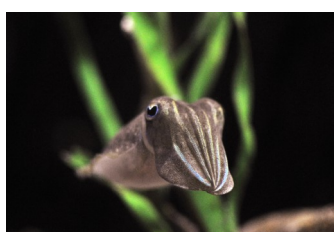
The MMO have published their [Cuttlefish Market Sampling Report](#). This project tested the effectiveness of species ID cards and gathered data from landings at Newlyn, Brixham, and Hastings. Click [here](#) for cuttlefish ID cards

Plymouth University, in collaboration with Cefas and Defra, is now seeking local knowledge to help fill evidence gaps on cuttlefish egg-laying behaviour and the potential benefits of artificial substrates. They are looking for:

- Observations of cuttlefish egg-laying on pots, nets, or artificial structures
- Timing and locations of spawning
- Any perceived risks to egg survival

Deadline: 1st February 2026

To participate, please contact Dr Alice Hall at alice.hall@plymouth.ac.uk or call 01752 584996. Interviews can take place in person or over the phone.



ZOOLOGICAL SOCIETY OF LONDON

ZSL through their [marine habitat restoration projects](#) work collaboratively to deliver and encourage the recovery and restoration of marine habitats. The projects they are involved with in our district are:

- [Essex Native Oyster Restoration Initiative \(ENORI\)](#)
- [Native Oyster Network UK & Ireland](#)
- [Restoring the Thamescape](#)



The
Wildlife
Trusts

The Wildlife Trusts' annual [Marine Review](#) highlights the work of over 100 Living Seas marine ecologists around our shores, supported by thousands of volunteers.

ASSOCIATION OF IFCAS

There are 10 Inshore Fisheries and Conservation Authorities in England. The 10 IFCAs are committees or joint committees of local government. The principal objective of the AIFCA is to carry on business of providing representation and support for the inshore fisheries and conservation authorities.

For further information on their work click [here](#) or read their [latest newsletter](#)

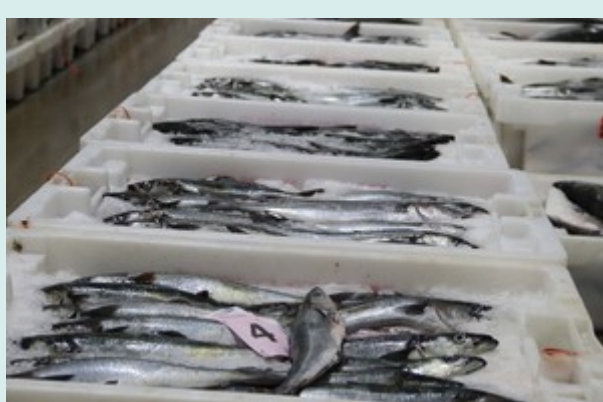


To lead, champion and manage a sustainable marine environment and inshore fisheries

Fish, Trace, Ship



The Marine Management Organisation has been working with the Fishing Industry to help them to prepare and be compliant with new EU Illegal, Unreported and Unregulated (IUU) fishing regulations which came into force on 9 January. The Fish, Trace, Ship campaign aimed at ensuring fishermen, processors, exporters and transporters could understand the new legal requirements and could continue to export products without disruption. This campaign had been shaped directly by industry feedback and remains in place at the [Fish, Trace, Ship campaign site](#)

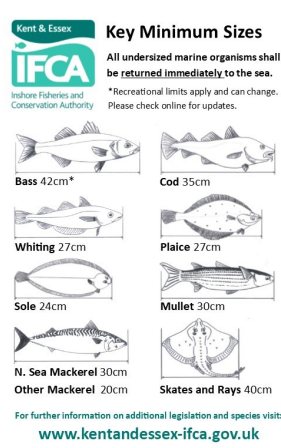


COMPLIANCE WITH KENT & ESSEX BYELAWS

We have developed a number of stickers and business card sized information sheets that can be used by both commercial and recreational fishers to check they are landing sizeable fish.

If you would like one of these free vinyl stickers and/or business card sized information sheets, please email info@kentandessex-ifca.gov.uk and we will be pleased to send them to you.

If you see anything that concerns you regarding a fishing activity in our district then ring us on 01843 585310.



The next meeting of the Authority will take place on:

Tuesday 27 January 2026

This meeting will be held at the Marconi room in Chelmsford council offices at 10am. Members of the public are welcome to attend.

Please click [here](#) to see our website for the full agenda and reports.

Should a member of the public wish to speak to the Authority Members on any item that is being discussed at a meeting then you should email info@kentandessex-ifca.gov.uk or phone the office on 01843 585310 to let us know you would like to do so.

We will need at least 48 hours' notice and will ask you to tell us which agenda item you wish to speak about and what your concern/interest is. We will then ask the Chairman to confirm his approval and contact you to let you know where to go and an approximate time you will be heard.

If you have any concerns about fishing activities in your area we want to hear from you.

Call us today on 01843 585310

If you experience any problems with the links you will find all the material on our website www.kentandessex-ifca.gov.uk